

ACETIC ACID ANALAR NORMAPUR

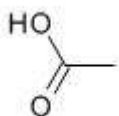


R: 10-35
S: 23-26-45
H: H226 H314
P: P210 P243 P280 P301+P330+P331 P304+P340 P309+P310
Danger

CAS: 64-19-7
EINECS: 200-580-7
ADR: 8,II

Molecular Formula

H_3CCOOH
MW 60,05 g/mol
Boiling Pt: 118°C (1013 hPa)
Melting Pt: 17°C
Density: 1,05 g/cm³ (20°C)
Flash Pt: 38.5°C



ASSAY: 99,8%

ΕΥΣΚΕΥΑΣΙΕΣ : 1 LTR - 2,5 LTR - 5 LTR

ACETONE GPR RECTAPUR

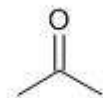


R: 11-36-66-67
S: 9-16-26
H: H225 H319 H336
EUH: EUH066
P: P210 P280 P305+P351+P338
Danger

CAS: 67-64-1
EINECS: 200-662-2
ADR: 3,II

Molecular Formula

$\text{C}_3\text{H}_6\text{O}$
MW 58,08 g/mol
Boiling Pt: 56.2°C (1013 hPa)
Melting Pt: -95.4°C
Density: 0,792 g/cm³ (20°C)
Flash Pt: Max. -20°C ()



ASSAY: 99,5%

ΕΥΣΚΕΥΑΣΙΕΣ : 1 LTR - 2,5 LTR - 5 LTR - 25 LTR - 50 LTR

AMMONIA SOLUTION 28% ANALAR NORMAPUR



R: 34-50
S: 26-36/37/39-45-61
H: H314 H335 H400
P: P280 P273 P301+P330+P331 P305+P351+P338 P309+P310
Danger

CAS: 1336-21-6 Index: 007-001-01-2

EINECS: 215-647-6 UN: 2672

ADR: 8,III

Molecular Formula

NH_3

MW 35,05 g/mol

Boiling Pt: 32°C (1013 hPa)

Melting Pt: -60°C

Density: 0,895 g/cm³ (20°C)

ASSAY: 28% ~ 32%

ΕΥΣΚΕΥΑΣΙΕΣ : 1LTR - 2,5 LTR - 5 LT

AMMONIUM ACETATE GPR RECTAPUR



H: H319 H335 H315
P: P280 P302+P352 P304+P340 P305+P351+P338 P309+P311
Warning

CAS: 631-61-8

EINECS: 211-162-9

Molecular Formula

$\text{C}_2\text{H}_7\text{NO}_2$

MW 77,08 g/mol

Melting Pt: 114°C

Density: 1,17 g/cm³ (20°C)

Flash Pt: 136°C

ASSAY: ~ 97%

ΕΥΣΚΕΥΑΣΙΕΣ: 0,500 KG - 1 KG - 5 KG

**AMMONIUM HYDROGEN CARBONATE GPR RECTAPUR
(AMMONIUM BICARBONATE)**



R: 22
H: H302
P: P301+P312
Warning

CAS: 1066-33-7

EINECS: 213-911-5

Molecular Formula

CH₅ NO₃

MW 79,06 g/mol

Melting Pt: 35°C

Density: 1,57 g/cm³ (20°C)

ASSAY: 97%

ΣΥΣΚΕΥΑΣΙΑ: 1 KG

AMMONIUM CARBONATE ANALAR NORMAPUR



R: 22
H: H302
P: P301+P312
Warning

CAS: 506-87-6

EINECS: 208-058-0

Molecular Formula

(NH₄)₂CO₃

MW 96,09 g/mol

Melting Pt: 58°C

Density: 1,5 g/cm³ (20°C)

ASSAY: 30% - 34%

ΣΥΣΚΕΥΑΣΙΕΣ: 0,500 KG - 1 KG

AMMONIUM CHLORIDE GPR RECTAPUR



R: 22-36
S: 22
H: H302 H319
P: P280 P301+P312 P305+P351+P338
Warning

CAS: 12125-02-9
EINECS: 235-186-4
Index: 017-014-00-8

Molecular Formula

H₄ ClN
MW 53,49 g/mol
Melting Pt: 335°C
Density: 1,5256 g/cm³ (20°C)

ASSAY: 99%

ΣΥΣΚΕΥΑΣΙΑ: 1KG

AMMONIUM SULFATE GPR RECTAPUR

CAS: 7783-20-2
EINECS: 231-984-1
REACH: 01-2119455044-46

Molecular Formula

(NH₄)₂SO₄
MW 132,14 g/mol
Melting Pt: 336 to 339 °C
Density: 1,78 g/cm³ (20°C)

ASSAY: 99%

ΣΥΣΚΕΥΑΣΙΕΣ: 1 KG - 5 KG

AMMONIUM THIOSULFATE

CAS: 7783-18-8

EINECS: 231-982-0

Molecular Formula

$H_8 N_2 O_3 S_2$

MW 148,21 g/mol

Density: 1,67 g/cm³ (20°C)

ΣΥΣΚΕΥΑΣΙΑ : 1 KG

BARIUM ACETATE ACS



R: 20/22

S: 28

H: H302+H332

P: P261 P304+P340 P309+P311

Warning

CAS: 543-80-6

EINECS: 208-849-0

ADR: 6.1,III

Index: 056-002-00-7

UN: 1564

Molecular Formula

$(H_3 C C O O)_2 B a$

MW 255,42 g/mol

Melting Pt: ~ 450°C

Density: 2,468 g/cm³ (20°C)

ΣΥΣΚΕΥΑΣΙΑ : 1 KG

BARIUM HYDROXIDE



R: 20/22-34
S: 26-36/37/39-45
H: H302+H332 H314
P: P280 P301+P330+P331 P304+P340 P309+P310
Danger

CAS: 17194-00-2
EINECS: 241-234-5
ADR: 8,III
Index: 056-002-00-7
UN: 3262

Molecular Formula

H_2BaO_2
MW 171,34 g/mol
Melting Pt: 325°C
Density: 2,18 g/cm³ (20°C)

ΣΥΣΚΕΥΑΣΙΕΣ : 0.50 KG – 0.250 KG – 1KG

BENZOTRIAZOLE



R: 20/22-36-52/53
H: H228 H302+H332 H319 H412
P: P210 P280 P273 P305+P351+P338 P309+P311
Danger

CAS: 95-14-7
EINECS: 202-394-1 UN: 2811
ADR: 6.1,III
UN: 2811

Molecular Formula

$C_6H_5N_3$
MW 119,13 g/mol
Boiling Pt: 350°C (1013 hPa)
Melting Pt: 99°C
Density: 1,34 g/cm³ (20°C)
Flash Pt: 170°C (closed cup)

ΣΥΣΚΕΥΑΣΙΕΣ : 0. 100 KG – 1 KG

CALCIUM ACETATE HYDRATE ANALYTICAL REAGENT

CAS: 114460-21-8

EINECS: 200-540-9

Molecular Formula

$(\text{H}_3\text{CCOO})_2\text{Ca}\cdot n\text{H}_2\text{O}$

MW 176,18 g/mol

Density: 1,5 g/cm³ (20°C)

Heavy metals (as Pb).Max.50ppm

ASSAY: 99.5%

ΣΥΣΚΕΥΑΣΙΑ : 0.500 KG

CALCIUM CARBONATE

CAS: 471-34-1

EINECS: 207-439-9

Molecular Formula

CaCO_3

MW 100,09 g/mol

Melting Pt: 825°C

Density: 2,71 g/cm³ (20°C)

ΣΥΣΚΕΥΑΣΙΕΣ : 0,500 KG – 1 KG

CALCIUM HYDROXIDE GRP RECTAPUR



R: 41
S: 22-24-26-39
H: H318
P: P280 P305+P351+P338 P309+P310
Danger

CAS: 1305-62-0
EINECS: 215-137-3

Molecular Formula

H₂ CaO₂
MW 74,09 g/mol
Melting Pt: 550°C
Density: 2,24 g/cm³ (20°C)

ASSAY: min.96%

ΣΥΣΚΕΥΑΣΙΕΣ : 1 KG – 5 KG

CARBOXYMETHYL CELLULOSE SODIUM SALT TECHNICAL

CAS: 9004-32-4
Viscosity (25°C; 2 %; water): 400 – 1000 mPa.S
Water: Max. 8%

ΣΥΣΚΕΥΑΣΙΑ : 1 KG

CASEIN TECHNICAL

CAS: 9000-71-9
EINECS: 232-555-1
Molecular Formula
Melting Pt: 280°C
Density: 1,25 g/cm³ (20°C)

ΣΥΣΚΕΥΑΣΙΑ : 1 KG

CHLOROFORM NORMAPUR® ACS, ISO, ANALYTICAL REAGENT

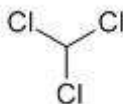


R: 22-38-40-48/20/22
S: 36/37
H: H351 H302 H373 H315
P: P201 P281 P302+P352 P309+P311
Warning

CAS: 67-66-3 Index: 602-006-00-4
EINECS: 200-663-8 UN: 1888
ADR: 6.1,III REACh: 05-2114614906-45

Molecular Formula

CHCl₃
MW 119,38 g/mol
Boiling Pt: 61.7°C (1013 hPa)
Melting Pt: -63°C
Density: 1,4832 g/cm³ (20°C)



ASSAY: 99% - 99,4%

ΣΥΣΚΕΥΑΣΙΕΣ: 1 LTR - 2,5 LTR

CITRIC ACID ANHYDROUS POWDER

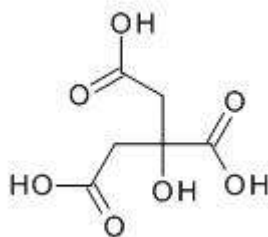


R: 41
S: 26-39-46
H: H319
P: P280 P305+P351+P338
Warning

CAS: 77-92-9
EINECS: 201-069-1

Molecular Formula

C₆ H₈ O₇
MW 192,13 g/mol
Boiling Pt: 310°C (1013 hPa)
Melting Pt: 149 to 151 °C
Density: 1,665 g/cm³ (20°C)



ASSAY: 99.5% - 100%

ΣΥΣΚΕΥΑΣΙΕΣ : 1 KG - 5 KG

CYCLOHEXANE GPR RECTAPUR®



R: 11-38-65-67-50/53
S: 9-16-25-33-60-61-62
H: H225 H304 H315 H336 H410
P: P210 P243 P280 P273 P301+P331 P302+P352 P304+P340
P309+P310
Danger

CAS: 110-82-7
EINECS: 203-806-2
ADR: 3,II
Index: 601-017-00-1
UN: 1145

Molecular Formula

C_6H_{12}
MW 84,16 g/mol
Boiling Pt: 81°C (1013 hPa)
Melting Pt: 7°C
Density: 0,7785 g/cm³ (20°C)
Flash Pt: -18°C



ASSAY: 99.0%

ΣΥΣΚΕΥΑΣΙΕΣ : 1 LTR - 2,5 LTR

CYCLODODECANE 99%



Product No.AB140416
CAS294-62-2
MDLMFCD00014258
Sum Formula $C_{12}H_{24}$
Molecular Weight168,36 g/mol
Density0,830 g/ml
Melting Point59°C - 61°C
Boiling Point111°C
Flash Point98°C

Hazardous StatementsH412

ΣΥΣΚΕΥΑΣΙΕΣ : 0.25 / 0.100 / 0.500 KGR

DICHLOROMETHANE NORMAPUR® stabilised with ethanol 0.10 %



R: 40
S: 23-24/25-36/37
H: H351
P: P201 P281 P308+P313
Warning

CAS: 75-09-2
EINECS: 200-838-9
ADR: 6.1,III
Index: 602-004-00-3
UN: 1593

Molecular Formula

CH₂Cl₂
MW 84,93 g/mol
Boiling Pt: 39,8°C (1013 hPa)
Melting Pt: -95°C
Density: 1,322 g/cm³ (20°C)

ASSAY: 99.5%

ΣΥΣΚΕΥΑΣΙΑ: 2.5 LTR

DIETHYL ETHER NORMAPUR® ACS, ANALYTICAL REAGENT

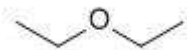


R: 12-19-22-66-67
S: 9-16-29-33
H: H224 H302 H336
EUH: EUH019 EUH066
P: P210 P243 P280 P304+P340 P309+P311
Danger

CAS: 60-29-7 Index: 603-022-00-4
EINECS: 200-467-2 UN: 1155
ADR: 3,I REACH: 01-2119535785-29

Molecular Formula

C₄H₁₀O
MW 74,12 g/mol
Boiling Pt: 35°C (1013 hPa)
Melting Pt: -123°C
Density: 0,7135 g/cm³ (20°C)
Flash Pt: -40°C



ASSAY: 99.7%

ΣΥΣΚΕΥΑΣΙΑ: 2.5 LTR

N,N-DIMETHYLFORMAMIDE NORMAPUR® ACS ANALYTICAL REAGENT



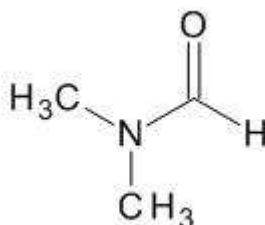
R: 61-20/21-36
S: 53-45
H: H226 H360D H312+H332 H319
P: P280 P261 P302+P352 P304+P340 P305+P351+P338 P308+P313
Danger

CAS: 68-12-2
EINECS: 200-679-5
ADR: 3,III
Index: 616-001-00-X

UN: 2265
REACH: 01-2119475605-32

Molecular Formula

$\text{HCOON}(\text{CH}_3)_2$
MW 73,09 g/mol
Boiling Pt: 153°C (1013 hPa)
Melting Pt: -61°C
Density: 0,949 g/cm³ (20°C)
Flash Pt: 57.5°C ()



ASSAY: 99,5%

ΣΥΣΚΕΥΑΣΙΑ : 2,5 LTR

ETHANOL ABSOLUTE NORMAPUR® ACS, ISO, PH. EUR. ANALYTICAL REAGENT



R: 11
S: 7-16
H: H225
P: P210 P243 P280
Danger



CAS: 64-17-5 Index: 603-002-00-5
EINECS: 200-578-6 UN: 1170
ADR: 3,II REACH: 01-2119457610-43

Molecular Formula

$\text{H}_3\text{CCH}_2\text{OH}$
MW 46,07 g/mol
Boiling Pt: 78.3°C (1013 hPa)
Melting Pt: -117°C
Density: 0,7895 g/cm³ (20°C)
Flash Pt: 12°C

ASSAY: 99,8%

ΣΥΣΚΕΥΑΣΙΕΣ : 1 LTR - 2,5 LTR - 5 LTR - 25 LTR

BIOETHANOL 96 % denatured with approx. 1 % MEK

CAS No.: 64-17-5

Molecular Formula:

C_2H_6O

Density: ~0,81

Molecular weight: 46,07 g/mol



Danger H225

Methyl Ethyl ketone (MEK) ~1 %

Evaporation Residue $\leq 0,005$ %

Aldehydes (as acetaldehyde) $\leq 0,001$ %

Methanol (GC) $\leq 0,01$ %

Acid or alkaline react. substances $\leq 0,003$ %

Sum of other impurities $\leq 0,03$ %

ASSAY: $\geq 96\%$

ΕΥΣΚΕΥΑΣΙΑ : 1 LTR – 2,5 LTR – 5 LTR – 10 LTR – 25 LTR

ETHANOL 99.9% denatured with approx. 1% MEK

bp 56-80 °C

D ~0,79

flp 12 °C

ADR 3 II / WGK 1

UN-No. 1170



Danger H225

Methyl ethyl ketone (MEK) ~1%

Acetone ~5 %

Methanol $\leq 0,1$ %

Aldehyde content (as acetaldehyde) $\leq 0,003$ %

Sum of other impurities $\leq 0,03$ %

Acid content (as CH_3COOH) $\leq 0,001\%$

Evaporation residue $\leq 0,003$ %

ASSAY: 98%

ΕΥΣΚΕΥΑΣΙΕΣ : 1 LTR – 2,5 LTR – 5 LTR - 25 LTR

EDTA DISODIUM SALT DIHYDRATE TECHNICAL

CAS: 6381-92-6

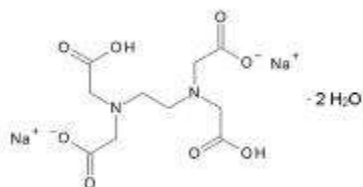
EINECS: 205-358-3

Molecular Formula

$C_{10}H_{14}N_2Na_2O_8 \cdot 2H_2O$

MW 372,24 g/mol

Melting Pt: 255°C



ASSAY: 98%

ΣΥΣΚΕΥΑΣΙΕΣ : 0.500 Kg-1 Kg

FORMIC ACID 98% GRP



R: 35

S: 23-26-36/37/39-45

H: H314

P: P280 P301+P330+P331 P305+P351+P338 P309+P310

Danger

CAS: 64-18-6

EINECS: 200-579-1

ADR: 8,II

Index: 607-001-00-0

UN: 1779

Molecular Formula

CH_2O_2

MW 46,03 g/mol

ASSAY: min.98%

ΣΥΣΚΕΥΑΣΙΑ : 1 LTR

N-HEXANE ANALAR NORMAPUR



R: 11-38-48/20-62-65-67-51/53
S: 9-16-29-33-36/37-61-62
H: H225 H361f H304 H373 H315 H336 H411
P: P201 P210 P243 P281 P273 P301+P331 P302+P352
P304+P340 P309+P310
Danger



CAS: 110-54-3 Index: 601-037-00-0

EINECS: 203-7776 UN: 1208

ADR: 3,II

Molecular Formula

$\text{H}_3\text{C}(\text{CH}_2)_4\text{CH}_3$

MW 86,18 g/mol

Boiling Pt: 69°C (1013 hPa)

Melting Pt: -94.3°C

Density: 0,659 g/cm³ (20°C)

Flash Pt: -22°C

ASSAY: min.95%



ΣΥΣΚΕΥΑΣΙΑ: 1 LTR

HYDROCHLORIC ACID ANALAR NORMAPUR ~ 37%



R: 34-37
S: 26-36/37/39-45-60
H: H314 H335
P: P280 P301+P330+P331 P305+P351+P338 P309+P310
Danger



CAS: 7647-01-0 Index: 017-002-01-X

EINECS: 231-595-7 UN: 1789

ADR: 8,II

Molecular Formula

HCl

MW 36,46 g/mol

Boiling Pt: 110°C (1013 hPa)

Melting Pt: -30°C

Density: 1,18 g/cm³ (20°C)

ASSAY: 35%-38%

ΣΥΣΚΕΥΑΣΙΑ: 2,5 LTR - 5 LTR

HYDROGEN PEROXIDE 30% GRP RECTAPUR

CAS: 7722-84-1 Index: 008-003-00-9

EINECS: 231-765-0

Molecular Formula

H₂O₂

MW 34,01 g/mol

Boiling Pt: 100°C (1013 hPa)

Density: 1,01 g/cm³ (20°C)

ASSAY: 30%

ΣΥΣΚΕΥΑΣΙΑ : 1 LTR

METHANOL CHROMANORM® gradient grade for HPLC



R: 11-23/24/25-39/23/24/25

S: 7-16-36/37-45

H: H225 H301+H311+H331 H370

P: P210 P243 P280 P302+P352 P304+P340 P309+P310

Danger

CAS: 67-56-1 Index: 603-001-00-X

EINECS: 200-659-6 UN: 1230

ADR: 3,II

REACH: 01-2119433307-44

Molecular Formula

H₃COH

MW 32,04 g/mol

Boiling Pt: 64.6°C (1013 hPa)

Melting Pt: -98°C

Density: 0,7918 g/cm³ (20°C)

Flash Pt: 11°C (closed cup)

ASSAY: 99.8%

ΣΥΣΚΕΥΑΣΙΕΣ : 1LTR - 2.5 LTR



METHYL ETHYL KETONE CHROMANORM® for HPLC



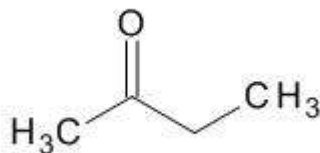
R: 11-36-66-67
S: 9-16
H: H225 H319 H336
EUH: EUH066
P: P210 P280 P305+P351+P338
Danger



CAS: 78-93-3 Index: 606-002-00-3
EINECS: 201-159-0 UN: 1193
ADR: 3,II REACH: 01-2119457290-43

Molecular Formula

C₄ H₈ O
MW 72,11 g/mol
Boiling Pt: 79.6°C (1013 hPa)
Melting Pt: -86°C
Density: 0,8054 g/cm³ (20°C)
Flash Pt: -4°C



ASSAY: 99.8%

ΣΥΣΚΕΥΑΣΙΕΣ: 1 LTR- 2.5 LTR

N-METHYL-2-PYRROLIDONE (NMP)



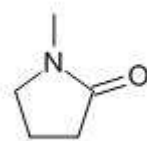
R: 61-36/37/38
S: 53-45
H: H360D H319 H335 H315
P: P201 P281 P302+P352 P304+P340 P305+P351+P338 P309+P311
Danger



CAS: 872-50-4
EINECS: 212-828-1
Index: 606-021-00-7

Molecular Formula

C₅ H₉ NO
MW 99,13 g/mol
Boiling Pt: 202°C (1013 hPa)
Melting Pt: -24°C
Density: 1,033 g/cm³ (20°C)
Flash Pt: 91°C



ΣΥΣΚΕΥΑΣΙΕΣ: 2.5 LTR

NITRIC ACID 68% NORMAPUR® analytical reagent



R: 35
S: 23-26-36/37/39-45
H: H272 H314
P: P210 P280 P301+P330+P331 P304+P340 P309+P310
Danger

CAS: 7697-37-2
EINECS: 231-714-2
ADR: 8,II
Index: 007-004-00-1
UN:2031

Molecular Formula

HNO₃
MW 63,01 g/mol
Boiling Pt: 122°C (1013 hPa)
Density: 1,41 g/cm³ (20°C)

ΣΥΣΚΕΥΑΣΙΕΣ: 1LTR – 2.5 LTR

OXALIC ACID dihydrate GPR RECTAPUR®

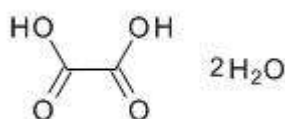


R: 21/22
S: 24/25
H: H302+H312
P: P261 P302+P352 P304+P340 P312
Warning

CAS: 6153-56-6
EINECS: 205-634-3
ADR: 8,III
Index: 607-006-00-8
UN: 3261
REACH: 01-2119534576-33

Molecular Formula

C₂ H₂ O₄ .2H₂ O
MW 126,07 g/mol
Boiling Pt: 149 to 160 °C (1013 hPa)
Melting Pt: 101°C
Density: 1,65 g/cm³ (20°C)



ASSAY: min. 99.5%

ΣΥΣΚΕΥΑΣΙΕΣ : 1 KG – 5 K

PHOSPHORIC ACID 85% (ORTHOPHOSPORIC ACID)



R: 34
S: 26-36/37/39-45
H: H314
P: P280 P301+P330+P331 P305+P351+P338 P309+P310
Danger

CAS: 7664-38-2 Index: 015-011-00-6
EINECS: 231-633-2 UN: 1805
ADR: 8,III
UN: 1805
INDEX: 015-011-00-6

Molecular Formula

H_3PO_4
MW 98 g/mol
Boiling Pt: 158°C (1013 hPa)
Melting Pt: 21°C
Density: 1,71 g/cm³ (20°C)
ΣΥΣΚΕΥΑΣΙΕΣ: 0.500 LTR – 2.5 LTR

POLYETHYLENE GLYCOL 400 TECHNICAL (P.E.G 400)

CAS: 25322-68-3
EINECS: 500-038-2

Molecular Formula

$H(OCH_2 CH_2)_nOH$
MW 400 g/mol
Boiling Pt: Min. 250°C (1013 hPa)
Melting Pt: 4 to 8 °C
Density: 1,13 g/cm³ (20°C)
Flash Pt: 245°C
ΣΥΣΚΕΥΑΣΙΕΣ: 1 LTR -2.5 LTR -5 LTR

POLYETHYLENE GLYCOL 4,000 TECHNICAL (P.E.G. 4000)

CAS: 25322-68-3
EINECS: 500-038-2

Molecular Formula

$H(OCH_2 CH_2)_nOH$
MW 4000 g/mol
Boiling Pt: Min. 250°C (1013 hPa)
Melting Pt: 53 to 58 °C
Density: 1,13 g/cm³ (20°C)
Flash Pt: 250°C
ΣΥΣΚΕΥΑΣΙΑ: 1 K

POTASSIUM CHLORIDE GPR RECTAPUR®

CAS: 7447-40-7

EINECS: 231-211-8

Molecular Formula

KCl

MW 74,55 g/mol

Boiling Pt: 1420°C (1013 hPa)

Melting Pt: 773°C

Density: 1,98 g/cm³ (20°C)

ASSAY: 99%

ΣΥΣΚΕΥΑΣΙΕΣ: 1 KG -5 KG

POTASSIUM HYDROXIDE PELLETS NORMAPUR®



R: 22-35

S: 26-36/37/39-45-60

H: H302 H314 H290

P: P280 P301+P330+P331 P304+P340 P309+P310

Danger

CAS: 1310-58-3

EINECS: 215-181-3

ADR: 8,II

Index: 019-002-00-8

UN: 1813

REACH: 01-2119487136-33

Molecular Formula

KOH

MW 56,11 g/mol

Boiling Pt: 1320°C (1013 hPa)

Melting Pt: 360°C

Density: 2,04 g/cm³ (20°C)

ASSAY: 85%

ΣΥΣΚΕΥΑΣΙΕΣ: 1 KG -5 KG

SILVER NITRATE ACS



R: 8-34-50/53
S: 26-36/37/39-45-60-61
H: H272 H314 H410
P: P210 P280 P273 P301+P330+P331 P304+P340 P309+P310
Danger

CAS: 7761-88-8
EINECS: 231-853-9
ADR: 5.1,II
Index: 047-001-00-2

Index: 047-001-00-2

UN: 1493

UN: 1493
REACH: 01-2119513705-43

Molecular Formula

AgNO₃
MW 169,87 g/mol
Boiling Pt: 444°C (1013 hPa)
Melting Pt: 210°C
Density: 4,35 g/cm³ (20°C)

ΣΥΣΚΕΥΑΣΙΕΣ: 0.25 KG - 0.100 KG - 0.500 KG

DI-SILVER OXIDE TECHNICAL



R: 8-34-44
S: 26-36/37/39-45
H: H272 H314
EUH: EUH044
P: P210 P280 P301+P330+P331 P304+P340 P309+P310
Danger

CAS: 20667-12-3
EINECS: 243-957-1
ADR: 5.1,II
UN: 3085

Molecular Formula

Ag₂O
MW 231,74 g/mol
Melting Pt: 800 to 830 °C
Density: 7,14 g/cm³ (20°C)

ASSAY: 99%

ΣΥΣΚΕΥΑΣΙΑ: 0.25 K

SODIUM HYDROGEN CARBONATE TECHNICAL (SODIUM BICARBONATE)

CAS: 144-55-8

EINECS: 205-633-8

Molecular Formula

NaHCO_3

MW 84,01 g/mol

Melting Pt: 270°C

Density: 2,159 g/cm³ (20°C)

ASSAY: 98%

ΣΥΣΚΕΥΑΣΙΕΣ: 1 KG – 5 KG

SODIUM CARBONATE TECHNICAL



R: 36

S: 22-26

H: H319

P: P280 P305+P351+P338

Warning

CAS: 497-19-8

EINECS: 207-838-8

Index: 011-005-00-2

REACH: 01-2119485498-19

Molecular Formula

CNa_2O_3

MW 105,99 g/mol

Boiling Pt: 1600°C (1013 hPa)

Melting Pt: 854°C

Density: 2,53 g/cm³ (20°C)

ΣΥΣΚΕΥΑΣΙΑ: 1 KG

SODIUM CHLORIDE TECHNICAL

CAS: 7647-14-5

EINECS: 231-598-3

Molecular Formula

ClNa

MW 58,44 g/mol

Boiling Pt: 1413°C (1013 hPa)

Melting Pt: 801°C

Density: 2,16 g/cm³ (20°C)

ASSAY: min.98%

ΣΥΣΚΕΥΑΣΙΕΣ: 1 KG - 5 KG

SODIUM-D-GLUCONATE TECHNICAL

CAS: 527-07-1

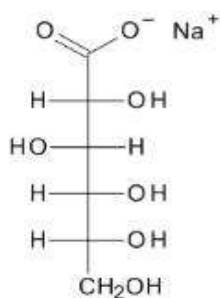
EINECS: 208-407-7

Molecular Formula

HOH₂C(CH(OH))₄COONa

MW 218,14 g/mol

Melting Pt: 170 to 175 °C



ΣΥΣΚΕΥΑΣΙΑ: 1 KG

SODIUM HEXAMETAPHOSPHATE TECHNICAL

CAS: 10124-56-8

EINECS: 233-343-1

Molecular Formula

Na₆ O₁₈ P₆

MW 611,77 g/mol

Melting Pt: 610°C

Density: 1,25 g/cm³ (20°C)

ΣΥΣΚΕΥΑΣΙΕΣ: 1 KG - 5 KG

SODIUM HYDROXIDE



R: 35
S: 26-37/39-45
H: H314
P: P280 P301+P330+P331 P305+P351+P338 P309+P310
Danger

CAS: 1310-73-2

EINECS: 215-185-5

ADR: 8,II

Index: 011-002-00-6

UN: 1823

REACH: 01-2119457892-27

Molecular Formula

NaOH

MW 40 g/mol

Boiling Pt: 1390°C (1013 hPa)

Melting Pt: 323°C

Density: 2,13 g/cm³ (20°C)

ΣΥΣΚΕΥΑΣΙΑ: 1 KG

SODIUM SULPHATE ANHYDROUS FINE POWDER

CAS: 7757-82-6

EINECS: 231-820-9

Molecular Formula

Na₂O₄S

MW 142,04 g/mol

Boiling Pt: 1429°C (1013 hPa)

Melting Pt: 888°C

Density: 2,7 g/cm³ (20°C)

ASSAY: 98.5-100%

ΣΥΣΚΕΥΑΣΙΑ: 1 KG - 5 KG

SODIUM THIOSULPHATE ANHYDROUS TECHNICAL

CAS: 7772-98-7

EINECS: 231-867-5

Molecular Formula

Na₂S₂O₃

MW 158,11 g/mol

Boiling Pt: 100°C (1013 hPa)

Melting Pt: 48°C

Density: 1,66 g/cm³ (20°C)

ΣΥΣΚΕΥΑΣΙΑ: 2.5

SULPHURIC ACID 95% TECHNICAL



R: 35
S: 26-30-45
H: H314 H290
P: P280 P301+P330+P331 P305+P351+P338 P309+P310
Danger

CAS: 7664-93-9

EINECS: 231-639-5

ADR: 8,II

Index: 016-020-00-8

UN: 1830

Molecular Formula

H_2SO_4

MW 98,08 g/mol

Boiling Pt: ~ 335°C (1013 hPa)

Melting Pt: 3°C

Density: 1,84 g/cm³ (20°C)

ASSAY: min.95% - 100%

ΣΥΣΚΕΥΑΣΙΕΣ: 1LTR - 2.5 LTR -5 LTR

TALC TECHNICAL



R: 20-37
S: 36
H: H332
Warning

CAS: 14807-96-6

EINECS: 238-877-9

Molecular Formula

$Mg_3O_{11}Si_4.H_2O$

MW 379,27 g/mol

Melting Pt: Min. 1200°C

Density: 2.58 to 2.83 g/cm³ (20°C)

ΣΥΣΚΕΥΑΣΙΕΣ: 0.500 KG

TANNIC ACID TECHNICAL

R: 52/53

S: 61

H: H412

CAS: 1401-55-4

EINECS: 215-753-2

Molecular Formula

Melting Pt: 218 to 219 °C

Density: Min. 1 g/cm³ (20 °C)

Flash Pt: 199°C

ΣΥΣΚΕΥΑΣΙΕΣ: 0.250 KG -0.500KG -1KG

THIOGLYCOLIC ACID 80%



R: 23/24/25-34

S: 26-28-36/37/39-45

H: H301+H311+H331 H314

P: P280 P301+P330+P331 P302+P352 P304+P340 P309+P310

Danger

CAS: 68-11-1

EINECS: 200-677-4

ADR: 8,II

UN:1940

Molecular Formula

C₂ H₄ O₂ S

MW 92,12 g/mol

Density: 1,27 g/cm³ (20°C)

ΣΥΣΚΕΥΑΣΙΑ: 1LTR

THIOUREA

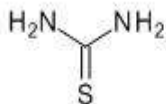


R: 22-40-63-51/53
S: 36/37-61
H: H351 H361d H302 H411
P: P201 P281 P273 P309+P311
Warning

CAS: 62-56-6
EINECS: 200-543-5
ADR: 9,III
Index: 612-082-00-0
UN: 3077

Molecular Formula

CH₄N₂S
MW 76,12 g/mol
Melting Pt: 174 to 177 °C
Density: 1,435 g/cm³ (20°C)



ΕΥΣΚΕΥΑΣΙΑ: 0.500 KG - 1KG

TOLUENE TECHNICAL

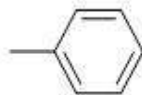


R: 11-38-48/20-63-65-67
S: 36/37-46-62
H: H225 H361d H304 H373 H315 H336
P: P201 P210 P243 P281 P301+P331 P302+P352 P304+P340 P309+P310
Danger

CAS: 108-88-3 Index: 601-021-00-3
EINECS: 203-625-9 UN: 1294
ADR: 3,II

Molecular Formula

C₆H₅CH₃
MW 92,14 g/mol
Boiling Pt: 110.6°C (1013 hPa)
Melting Pt: -95°C
Density: 0,867 g/cm³ (20°C)
Flash Pt: 4°C



ASSAY: min.98%

ΕΥΣΚΕΥΑΣΙΕΣ: 2.5 LTR - 5 LTR

TRITON® X-100 REAGENT GRADE



R: 22-41-51/53
S: 26-39-61
H: H302 H318 H411
P: P280 P273 P305+P351+P338 P309+P310
Danger

CAS: 9002-93-1

ADR: 9,III

UN:3082

Molecular Formula

Boiling Pt: Min. 200°C (1013 hPa)

Melting Pt: 6°C

Density: 1,06 g/cm³ (20°C)

Flash Pt: 251°C (closed cup)

ΣΥΣΚΕΥΑΣΙΕΣ: 1LTR-4 LTR

UREA ULTRAPURE

CAS: 57-13-6

EINECS: 200-315-5

REACH: 01-2119463277-33

Molecular Formula

CH₄N₂O

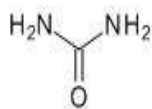
MW 60,06 g/mol

Boiling Pt: 197°C (1013 hPa)

Melting Pt: 132.7°C

Density: 1,34 g/cm³ (20°C)

ΣΥΣΚΕΥΑΣΙΕΣ: 1KG -5 KG



XYLENE TECHNICAL

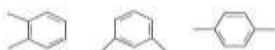


R: 10-20/21-38
S: 25
H: H226 H312+H332 H315
P: P210 P243 P280 P302+P352 P304+P340 P309+P311
Danger

CAS: 1330-20-7
EINECS: 215-535-7
ADR: 3,III
Index: 601-022-00-9
UN:1307

Molecular Formula

C₈ H₁₀
MW 106,17 g/mol
Boiling Pt: 140°C (1013 hPa)
Melting Pt: -34 to 34 °C
Density: 0.86 to 0.88 g/cm³ (20°C)
Flash Pt: 25°C



ASSAY: min.98%

ΣΥΣΚΕΥΑΣΙΕΣ: 1LTR-2.5 LTR-5 LTR

ZING PELLETS NORMAPUR® ANALYTICAL REAGENT

CAS: 7440-66-6
EINECS: 231-175-3

Molecular Formula

Zn
MW 65,39 g/mol
Boiling Pt: 908°C (1013 hPa)
Melting Pt: 420°C
Density: 7,14 g/cm³ (20°C)

ASSAY: 99.9%

ΣΥΣΚΕΥΑΣΙΕΣ: 0.250 KG – 1KG